



plansecure

Live safe and smart.



Security at the highest level



MORE PROTECTION, MORE COMFORT

“Security and health are among our most valuable assets. That is why they require special protection. Our Plansecure Homes provide it in a truly unique way. They combine top-level security with stylish comfort – and are based on solutions that are exclusively available through Plansecure in this form. So that your home can be what it is meant to be: a protected space where you can enjoy your private life with complete peace of mind.”

[Anton Hieber, CEO Plansecure](#)

Plansecure Homes: Unique across three categories

SECURITY

Plansecure Homes provide protection that not only meets the most stringent standards on paper, but also proves itself in everyday use. The internationally patented safe house systems of our manufacturing partner Sälzer have been in use for over 50 years in government facilities, embassies, and military buildings worldwide.

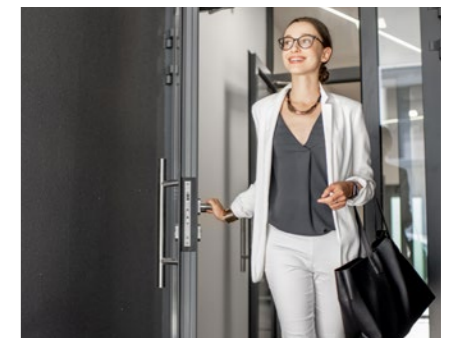
This proven technology is complemented by Plansecure's own developments with positive preliminary patent decisions – such as movable armored viewing surfaces and modular, integrated safe rooms. This construction method is exclusively available worldwide in the private sector through Plansecure.



COMFORT

A Plansecure Home is both a secure refuge and a living space in one. Unlike a traditional basement bunker designed solely for emergencies, it can be used comfortably and in a variety of ways – whether as a pool house, garden house, or guest house – the possibilities are virtually unlimited.

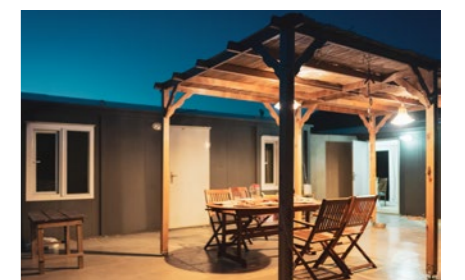
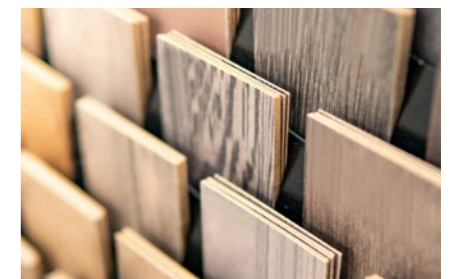
The integrated security elements are hardly noticeable in everyday use, yet they demonstrate exceptional resilience when it truly matters.



LIFESTYLE

Do you prefer a minimalist aesthetic? Or something more glamorous? Plansecure Homes are designed to meet not only your security needs but also your lifestyle. Their design can be customized to suit your personal preferences.

A wide range of options is available for both the exterior façade design and the materials used in the interior.



Solutions that integrate seamlessly

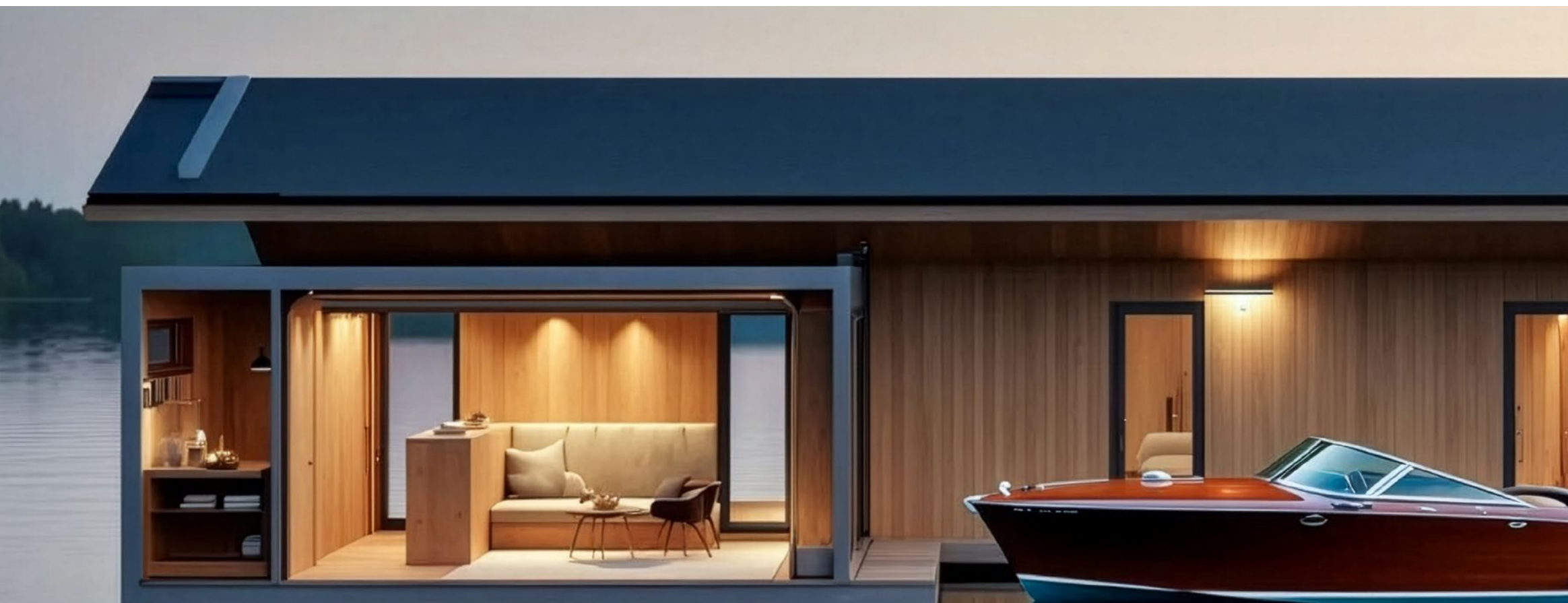
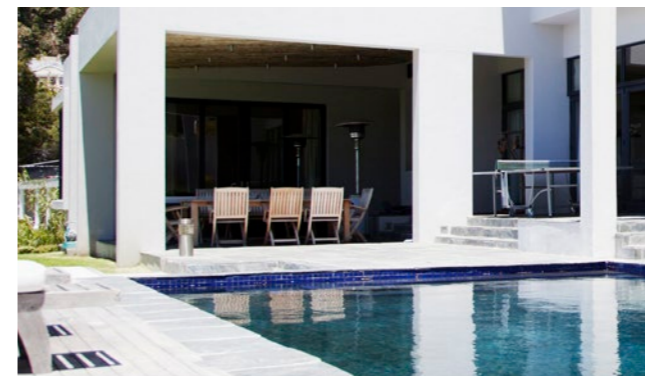
Plansecure Homes elevate personal security to the next level without making it visibly apparent. Together with existing spaces and areas of your property, they form a harmonious overall concept. You can configure your Plansecure Home entirely according to your preferences and wishes – from design style and size to usage options and interior furnishings.

The examples shown here represent just a selection of the many possibilities available.

03 Lifestyle variants for every design preference

13+ square meters of protected, multifunctional space

99+ Options for further customization



POOL HOUSE

Turn your Plansecure Home into a bath and sauna area with views of nature.

WORK SPACE

Create a private, distraction-free space for working from home.

LIVING AREA

Expand your living space, for example with a bar or lounge.

GUEST ROOM

Combine security with the ability to host guests.

BOAT HOUSE

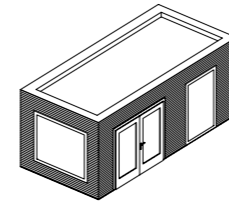
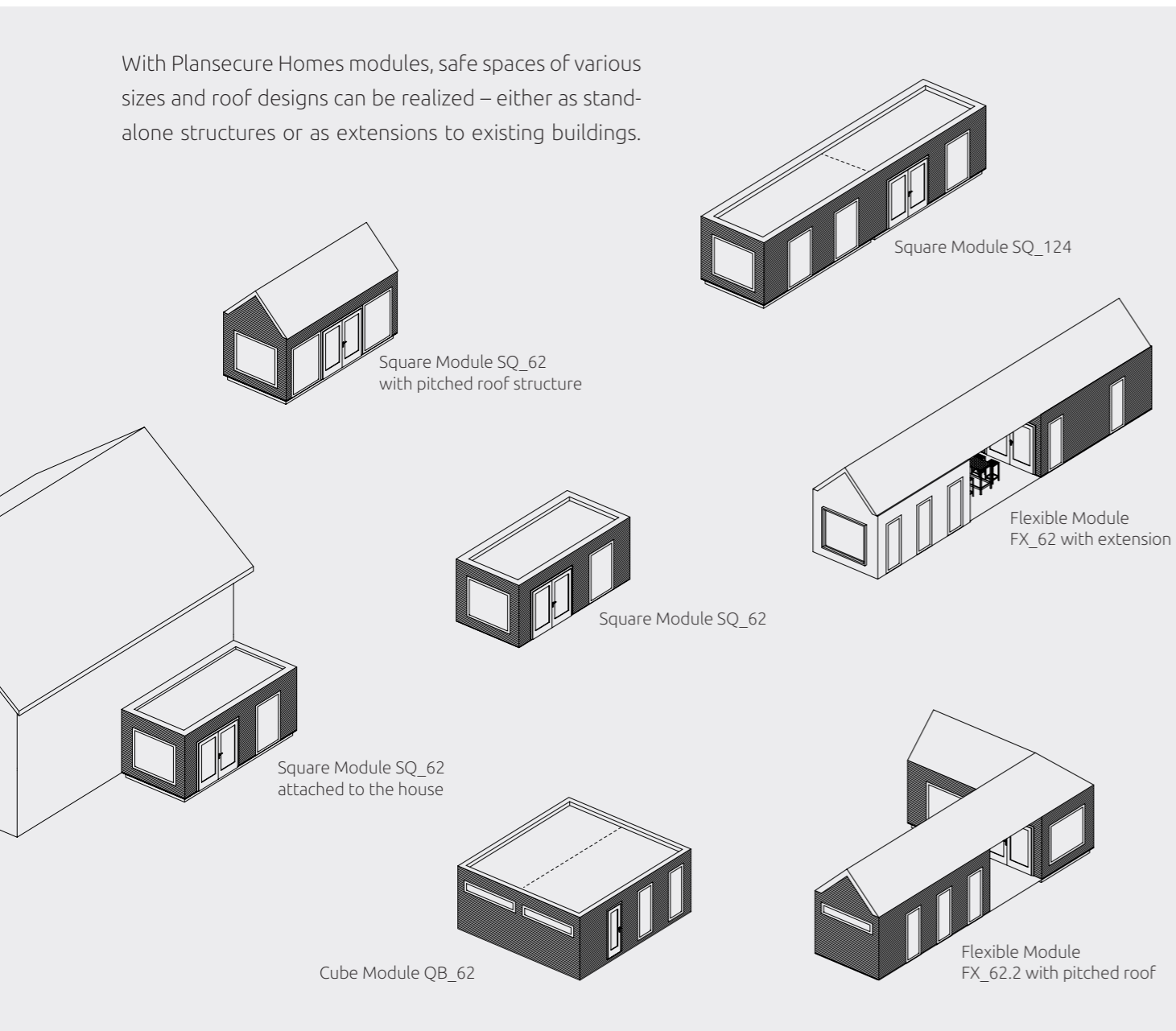
Protected by the water – a secure retreat for boat owners.

FREE USE

Plansecure Homes are also available as empty units for later customization.

Maximum flexibility thanks to modular design

With Plansecure Homes modules, safe spaces of various sizes and roof designs can be realized – either as stand-alone structures or as extensions to existing buildings.

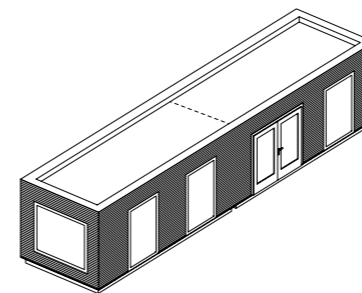


SQUARE MODULES

With just over 13 square meters of living space, **SQ_62** is the smallest module for a Plansecure Home. This module, as well as all others, can be combined lengthwise if required.

Dimensions (L × W × H): 6.20 x 2.75 x 3.00 m

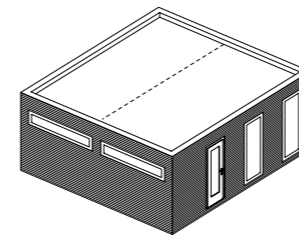
Security classes: FB 4 / RC 4, FB 7 / RC 5 and STANAG 2280 / C5, Class C5



SQ_124 corresponds in floor area to two SQ_62 modules. Like all other modules, it can be used with a flat roof or fitted with a pitched roof.

Dimensions (L × W × H): 12.40 x 2.75 x 3.00 m

Security classes: FB 4 / RC 4, FB 7 / RC 5 and STANAG 2280 / C5, Class C5

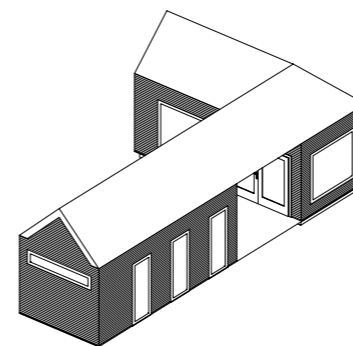


CUBE MODULES

QB_62 features a square footprint. It can be used as a standalone unit or combined – either with another QB_62 module or with a Square Module.

Dimensions (L × W × H): 6.20 x 6.20 x 3.00 m

Security classes: FB 4 / RC 4, FB 7 / RC 5 and STANAG 2280 / C5, Class C5

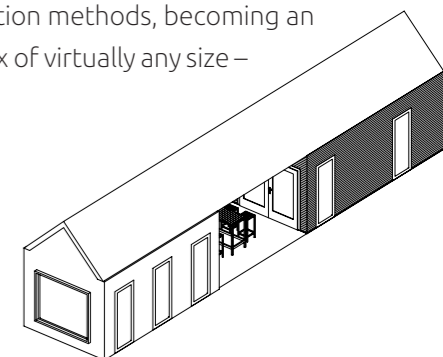


FLEXIBLE MODULES

FX_62 is the module that makes Plansecure Homes even more flexible. It can be combined with conventional construction methods, becoming an integrated high-security area within a complex of virtually any size – shown here with an open, covered section.

Dimensions (L × W × H): 6.20 x 2.75 x 3.00 m

Security classes: FB 4 / RC 4, FB 7 / RC 5 and STANAG 2280 / C5, Class C5



Design options tailored to your taste and lifestyle

The customization possibilities of a Plansecure Home are virtually unlimited. By choosing one of three exclusive lifestyle variants, you first define the framework within which your home will ultimately be realized in every detail according to your preferences and vision.

GOLD

Luxurious, refined, and prestigious: this is how Plansecure Homes present themselves in the Gold lifestyle variant. The exterior façade is glazed – and optionally mirrored – creating striking visual accents.

Inside, premium materials such as fine woods, marble, and slate dominate, providing an elegant setting for further customized features.



GREEN

Sustainability and security are not mutually exclusive. Those who choose a Plansecure Home in the Green lifestyle variant rely on natural materials and environmentally conscious construction.

The exterior façade is clad in wood. The roof is greened to create valuable habitat for plants and insects.



CLEAN

Purist, understated, with clean lines and subtle colors: this deliberately minimalist design defines the appeal of Plansecure Homes in the Clean lifestyle variant.

Inspired by the iconic Bauhaus style, they draw on industrial design principles – reflected, among other things, in the optional metal façade.



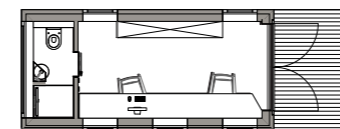


One Plansecure Home, countless possibilities



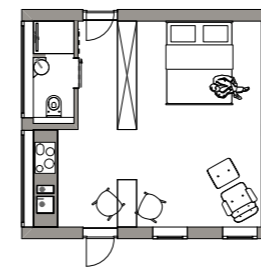
In Plansecure Homes, the highest level of security, style, and functionality go hand in hand. The expansion possibilities are on par with those of conventional homes and spaces.

Whether used, for example, as a workspace, guest house, or pool house, Plansecure Homes can be equipped with every conceivable feature – from an independent energy supply to smart home solutions.



WORK SPACE

This office setup is based on the **SQ_62** module. It is equipped with a desk for two workstations, a sideboard, as well as a restroom and shower. Access is via a terrace.



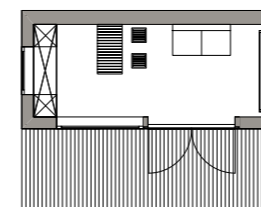
GUEST ROOM

The **QB_62** module is ideally suited as a guest house. Equipped with a double bed, wardrobe, restroom, and shower, as well as a terrace, it offers a comfortable, residential atmosphere.



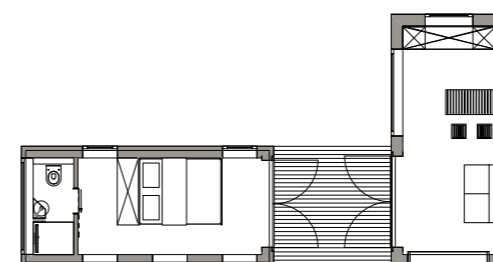
COMFORT ROOM

With a table, lounge chairs, its own kitchenette, and a restroom, the **SQ_62** module becomes a comfortable space where you can also enjoy a snack.



LOUNGE

Relax? With security, of course. A sofa, complemented by a design classic such as the Eames Chair by Vitra with matching ottoman, along with a large terrace with wide glass doors, transforms the **SQ_62** module into a perfect place to relax.



LIVING AREA

Through the hatched section in conventional construction, two **FX_62** modules are connected at a right angle to form a residential complex consisting of a high-security sleeping area and a lounge area. The shower and restroom are located in close proximity to the double bed. Cabinets and seating complete the interior.

Protection far beyond standard levels

02 **patent applications** with positive preliminary decisions for two Plansecure technologies: for protective systems with movable, armored viewing surfaces and for modular safe rooms that can be integrated into existing buildings without affecting their structure.

03 **security variants** based on strict standards are available.

250+ **international patents** are held by our manufacturing partner Sälzer for security solutions.

950+ **test certificates** confirm the effectiveness of the protection provided.

Modular security solutions featuring Sälzer technology for private applications are available worldwide exclusively through Plansecure.

Plansecure Homes are available in three different security variants: FB 4 / RC 4, FB 7 / RC 5, and STANAG 2280 / C5. All meet the highest international protection standards for both intrusion and ballistic resistance. Even tilted windows cannot be pried open, drilled through, or cut open.

And with the Plansecure STANAG 2280/C5 security variant, which limits design flexibility due to the combination of multiple protective elements, the façade, windows, and doors can withstand even artillery shells fired at close range.



STANDARD (FB 4 / RC 4)

German and European standards define protection classes for ballistic resistance and intrusion. The FB 4 and RC 4 classes of this security variant include the following:



Protection against ballistic penetration: handguns and ammunition up to calibers .357 Magnum and .44 Remington Magnum



Protection against drilling: handheld drills with a resistance time of at least 10 minutes



Protection against tools: hammers and screwdrivers with a resistance time of at least 10 minutes



Protection against prying and physical force: with a resistance time of at least 10 minutes



ADVANCED (FB 7 / RC 5)

According to DIN EN 1522 and 1523 for ballistic resistance, as well as DIN EN 1627–1630 in combination with DIN EN 356 for intrusion resistance, this security variant provides:



Protection against ballistic penetration: rifles, assault rifles (AK-47, NATO G3), as well as armor-piercing ammunition up to 7.62 × 51 mm



Protection against power tools: drills, jigsaws/reciprocating saws, and angle grinders for up to 15 minutes



Protection against heavy tools: axes and bolt cutters for up to 15 minutes

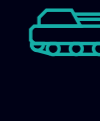


Optional supply protection through autonomous fresh water tanks and energy storage systems



MILITARY (STANAG 2280 / C5)

STANAG is the standardization agreement of NATO member states and defines standards for blast resistance. This security variant meets Class C5:



Protection against artillery shells: caliber 155 mm at a firing distance of 1.5 meters



Protection against explosives: 7 kilograms detonated at a distance of 1.5 meters



Protection against ballistic penetration: even from heavy machine guns and large-caliber ammunition up to .50 BMG (12.7 × 99 mm NATO)



Protection against ballistic penetration: from all handheld firearms

Combined security, tested and certified



ALL REQUIREMENTS AT A GLANCE

While protection against ballistic penetration requires a rigid structure, protection against explosions depends on flexibility, and intrusion resistance relies on stability – completely opposing requirements that Plansecure meets with tested and certified solutions.



DOORS

Thanks to their appealing design, it is not apparent how secure the doors of Plansecure Homes are. However, independent testing institutions confirm it: they withstand even the most demanding stress and load tests – including an explosion of 500 kilograms of explosives exerting pressure of up to 2,730 kPa on them for several seconds.

German engineering expertise from our manufacturing partner Sälzer, along with high-strength materials for profiles, door leaves, frames, and hinges, make this possible.



WINDOWS

Thermal insulation, daylight control, ventilation, design element... Even conventional windows fulfill many functions. In Plansecure Homes, effective protection against gunfire, explosions, and intrusion is added.



FACADES

The façades of Plansecure Homes are also certified against intrusion, ballistic penetration, and explosions. Their security components are concealed behind stylish wood and metal cladding.



LOCKING MECHANISMS

To ensure entry and exit of your Plansecure Home even in the event of a power outage, all locks and locking systems operate purely mechanically – independent of the option to install an autonomous power supply to continue operating lighting and devices if necessary.

Step by step to your Plansecure Home

Every Plansecure Home is unique – custom-built to meet individual security needs and preferences. To ensure it meets your expectations 100 percent, Plansecure places great importance on comprehensive, expert consultation and detailed planning.

Step by step, ideas are transformed into sketches on paper and ultimately into a tangible space that combines protection, comfort, and functionality under one roof – a Plansecure Home. Delivered turnkey, it keeps threats away from a carefree life.

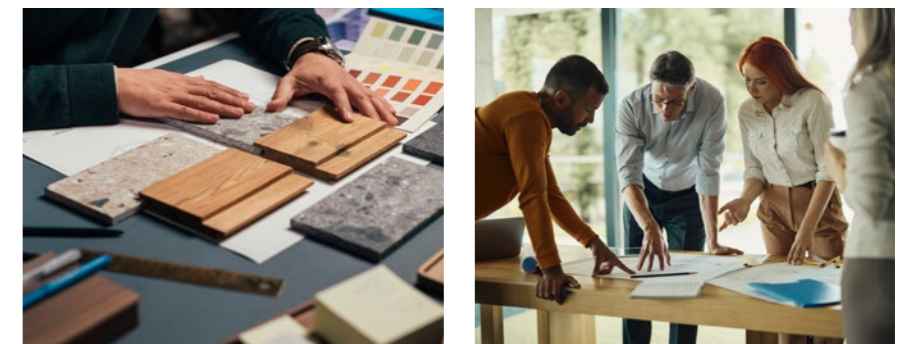


CONSULTING

In a personal consultation, one of our planning and security experts will advise you on your requirements and preferences and discuss the available implementation options with you.

SELECTION

You choose the Plansecure Home that best meets your security needs and preferences – in terms of size, shape, protection classes, lifestyle variant, as well as roof, façade, and interior design.



PLANNING

Our team of architects, engineers, and interior designers develops a concrete implementation plan, including a cost estimate, and presents it to you for approval.

MANUFACTURING

After approval, the manufacturing process begins. Every detail of your individual Plansecure Home—from the exterior shell to the interior fittings—is executed exactly as planned.

HANDOVER

It is delivered pre-assembled, installed, and handed over turnkey.





plansecure

Plansecure GmbH
Luitpoldstraße 10
86830 Schwabmünchen
Germany

T. +49 8232 95 22 707
M. +49 172 82 979 01
E. contact@plansecure.eu
www.plansecure.eu